

SUBMITTAL SHEET

| | |
|-------------------|-------------|
| JOB NAME | ITEM TAG |
| JOB LOCATION | PART NUMBER |
| CONTRACTOR | DATE |
| ENGINEER APPROVAL | DATE |

HIGH PERFORMANCE AIR & DEBRIS ELIMINATOR

T-88

Union connections with multiple connection type options*
 Automatic, serviceable air vent with check valve
 1/4 turn drain valve with GHT and tethered cap
 Serviceable stainless steel screen
 Available in 3/4" to 1-1/2" sizes.

- *Requires adapter to connect to the system piping.
- Manufactured in an ISO accredited facility

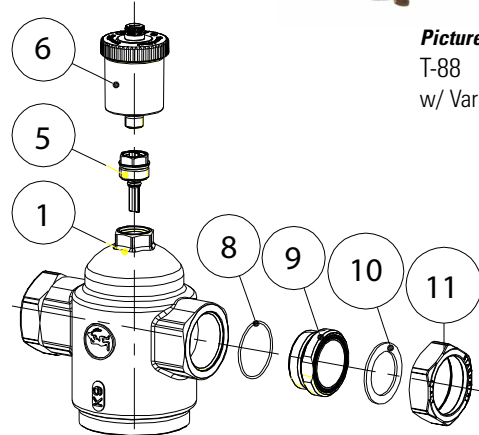


Specifications:

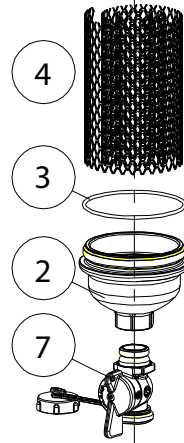
| | |
|----------------------------------|------------|
| Max. Working Pressure, Non-Shock | 125 p.s.i. |
| Max. Working Temperature | 230° F |

MATERIAL SPECIFICATION

| PART | MATERIAL | SPECIFICATION |
|-----------------------|---------------------|----------------------|
| 1 Body | Forged brass | ASTM B124 UNS C37700 |
| 2 End adapter | Forged brass | ASTM B124 UNS C37700 |
| 3 O-ring | EPDM | Commercial grade |
| 4 Internal strainer | Stainless steel | AISI 304 |
| 5 Check valve | Forged brass (body) | ASTM B124 UNS C37700 |
| 6 Air Vent | Forged brass (body) | ASTM B124 UNS C37700 |
| 7 Drain valve w/ GHT | Forged brass (body) | ASTM B124 UNS C37700 |
| 8 O-ring (2) | EPDM | Commercial grade |
| 9 Body adapter (2) | Forged brass | ASTM B124 UNS C37700 |
| 10 Adapter gasket (2) | EPDM | Commercial grade |
| 11 Union nut (2) | Forged brass | ASTM B124 UNS C37700 |



Pictured
T-88
w/ Various Tail Pieces



Pictured
T-88
Exploded View

SUBMITTAL SHEET

| | | |
|-------------------|------|-------------|
| JOB NAME | | ITEM TAG |
| JOB LOCATION | | PART NUMBER |
| CONTRACTOR | DATE | |
| ENGINEER APPROVAL | DATE | |

DIMENSIONS (Inches)

| Size | A | B | C | D | E |
|-----------------|-------|-------|------|------|------|
| 3/4" FNPT | 11.80 | 6.50 | 5.29 | 6.52 | 3.07 |
| 3/4" MNPT | 11.80 | 7.20 | 5.29 | 6.52 | 3.07 |
| 3/4" SWT | 11.80 | 6.38 | 5.29 | 6.52 | 3.07 |
| 3/4" PRESS | 11.80 | 8.00 | 5.29 | 6.52 | 3.07 |
| 3/4" ISO COMP | 11.80 | 8.38 | 5.29 | 6.52 | 3.07 |
| 3/4" ISO FNPT | 11.80 | 8.25 | 5.29 | 6.52 | 3.07 |
| | | | | | |
| 1" FNPT | 11.80 | 7.50 | 5.29 | 6.52 | 3.07 |
| 1" MNPT | 11.92 | 7.38 | 5.60 | 6.32 | 3.46 |
| 1" SWT | 11.80 | 7.38 | 5.29 | 6.52 | 3.07 |
| 1" PRESS | 11.92 | 9.25 | 5.60 | 6.32 | 3.46 |
| 1" ISO COMP | 11.92 | 9.81 | 5.60 | 6.32 | 3.46 |
| 1" ISO FNPT | 11.92 | 9.50 | 5.60 | 6.32 | 3.46 |
| | | | | | |
| 1-1/4" FNPT | 11.92 | 10.31 | 5.60 | 6.32 | 3.46 |
| 1-1/4" MNPT | 11.92 | 9.13 | 5.60 | 6.32 | 3.46 |
| 1-1/4" SWT | 11.92 | 9.13 | 5.60 | 6.32 | 3.46 |
| 1-1/4" ISO FNPT | 11.92 | 10.31 | 5.60 | 6.32 | 3.46 |
| | | | | | |
| 1-1/2" MNPT | 12.13 | 10.00 | 5.50 | 6.63 | 3.50 |
| 1-1/2" SWT | 12.13 | 10.00 | 5.50 | 6.63 | 3.50 |

