

SUBMITTAL SHEET

JOB NAME		ITEM TAG	
JOB LOCATION		PART NUMBER	
CONTRACTOR	DATE		
ENGINEER APPROVAL	DATE		

DUAL CHECK BACKFLOW PREVENTER

T-457

- Forged brass construction
- Plastic check modules with stainless steel springs
- Single-union inlet connection
- Designed for residential or commercial continuous or intermittent water pressure containment, downstream of the meter
- Available in FIP configurations
- Can be installed vertically or horizontally

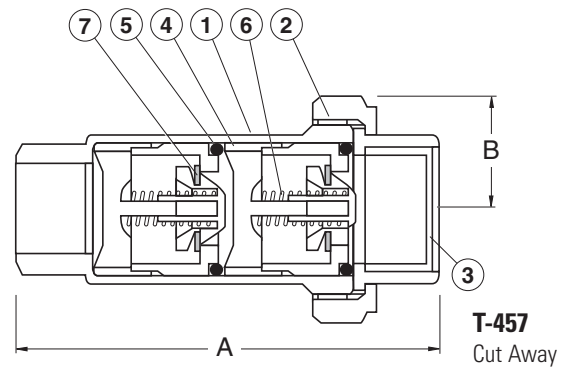
Pressure Rating, Non-Shock (PSI)

- Saturated Steam: Not suitable for steam service
- Maximum Water Pressure: 150 psi @ ambient temperature
- Maximum Water Temperature: 180 degrees F
- Minimum Operating Pressure: 10 psi

- Certified to ASSE Standard 1024
- Certified to CSA Standard B64.6
- Female pipe threads comply with ANSI / ASME B1.20.1
- Manufactured in an ISO 9002 accredited facility



MATERIAL SPECIFICATION		
PART	MATERIAL	SPECIFICATION
1 Body	Forged brass	ASTM B124/124M UNS C37700
2 Union nut	Forged brass	ASTM B124/124M UNS C37700
3 Female adapter	Forged brass	ASTM B124/124M UNS C37700
4 Check module (2)	Acetal resin	COPOLYMER 090
5 Check O-ring (2)	Buna-N (NBR) rubber	Commercial grade
6 Module spring (2)	Stainless steel	AISI 304
7 Module seat (2)	Buna-N (NBR) rubber	Commercial grade



DIMENSIONS				
Size	A	B	Cv (gpm)	Wt. (lb)
1/2"	4.08	1.19	5.51	1.24
3/4"	4.11	1.19	5.51	1.09
1"	4.21	1.19	5.51	1.15